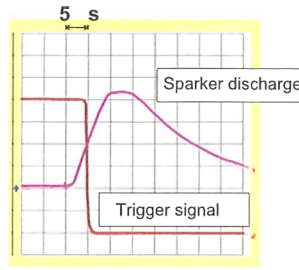


equipment consists of the ele  
 generator IPG and the remote c  
 RCU. To the surge generato  
 seismic sparker sources  
 connected. Triggering of th  
 aquisition system is performe  
 remote unit.



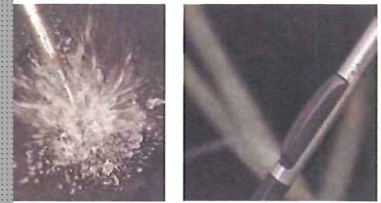
Technical data BIS-SH

Housing: stainless steel  
 Length: approx 70cm  
 Diameter: for 3 to 5 " I  
 Depth range: 65 m (or  
 Clamping: pneumatic  
 Rotation: via pipe strin



Boreho

The basic seismic crossho



-Waves

Technical data IPG 1005

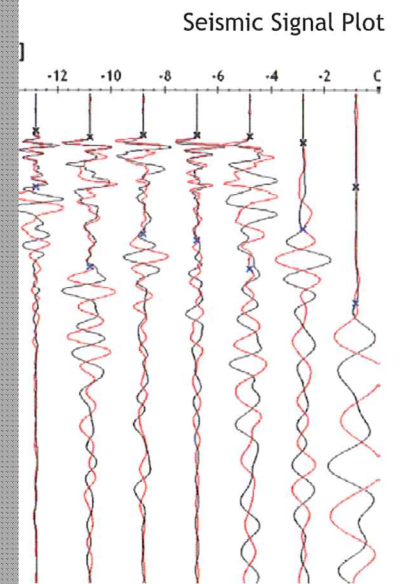
Impulse voltage: 5 KV  
 Impuls energy: 1000 J  
 Repetition rate: from 4 to 7 s  
 Power supply: 230 V 50 Hz 2,5 A  
 Dimensions: 52 x 25 x 50 cm  
 Weight: ~ 52 Kg  
 Working Mode: Manual/Continuous  
 Emergency OFF button  
 Safety key switch



RCU

Technical data RCU

Low/High trigger output  
 Trigger test option  
 Trigger level adjustment  
 Pulse Counting  
 Single shot release  
 Continuous shot release  
 Variable repetition rate from 4..7 sec.)  
 Emergency OFF button  
 Safety key switch



flexible

For information contact:  
[info@geotomographie.de](mailto:info@geotomographie.de)